

# Corporate event dossier



# Table of Contents

## **Oh My Club**

Spaces  
Location

---

## **Spaces**

Main Stage  
Palco azul  
Palco verde  
Onyx room

---

## **Services**

Audiovisual  
Catering  
Shows & entertainment

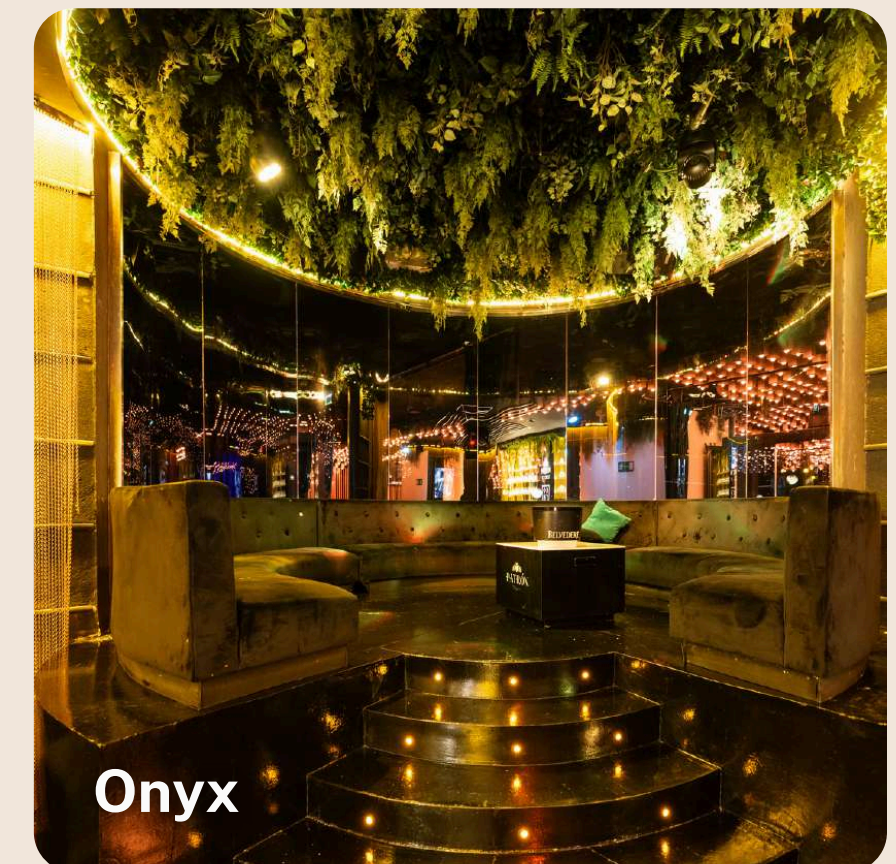
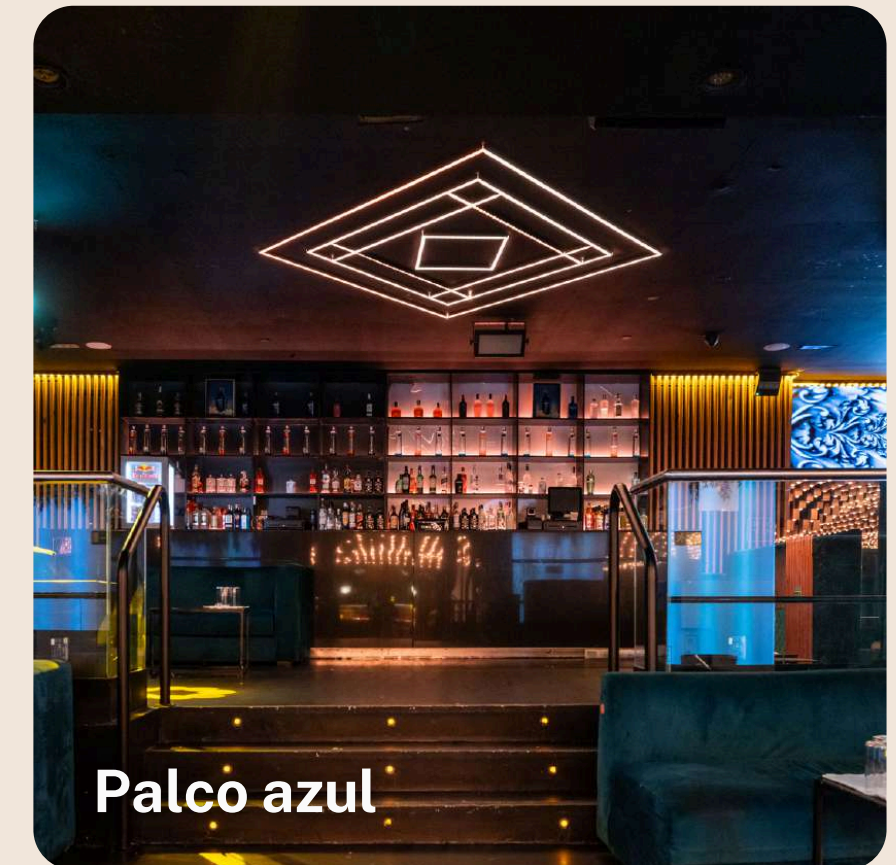
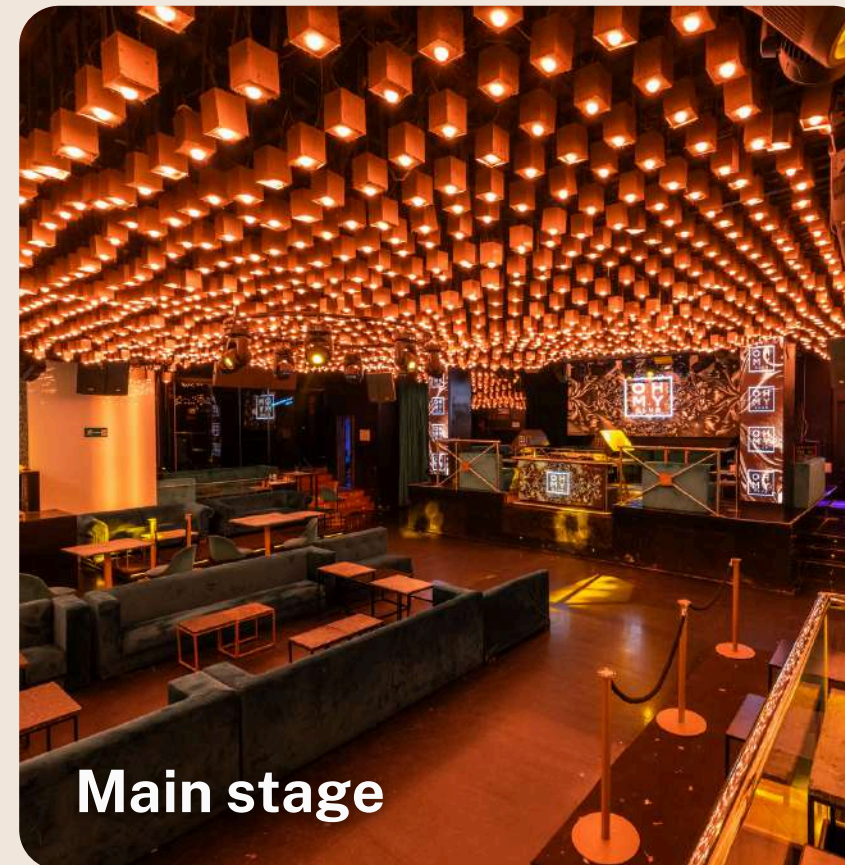
# Oh My Club



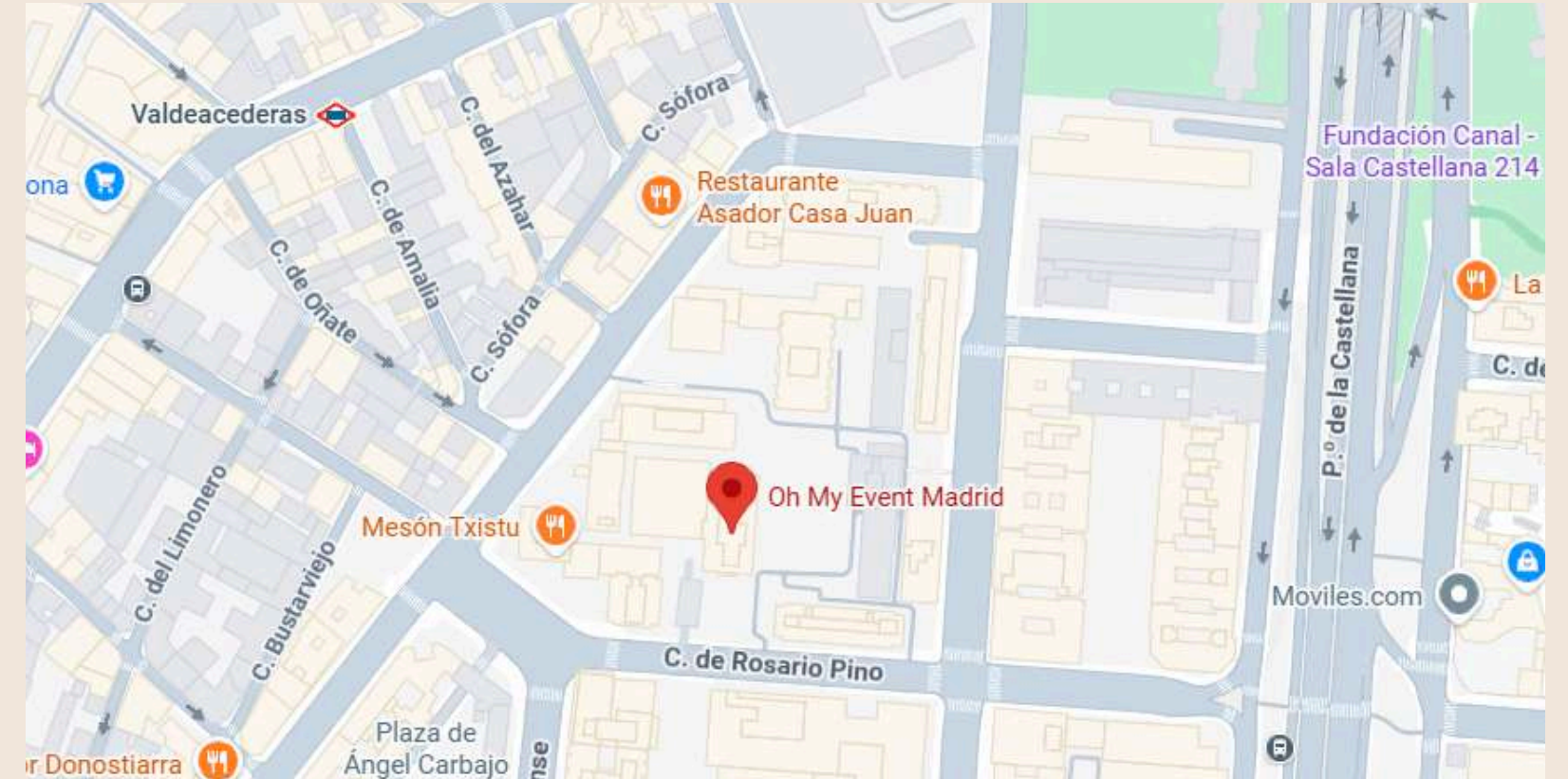
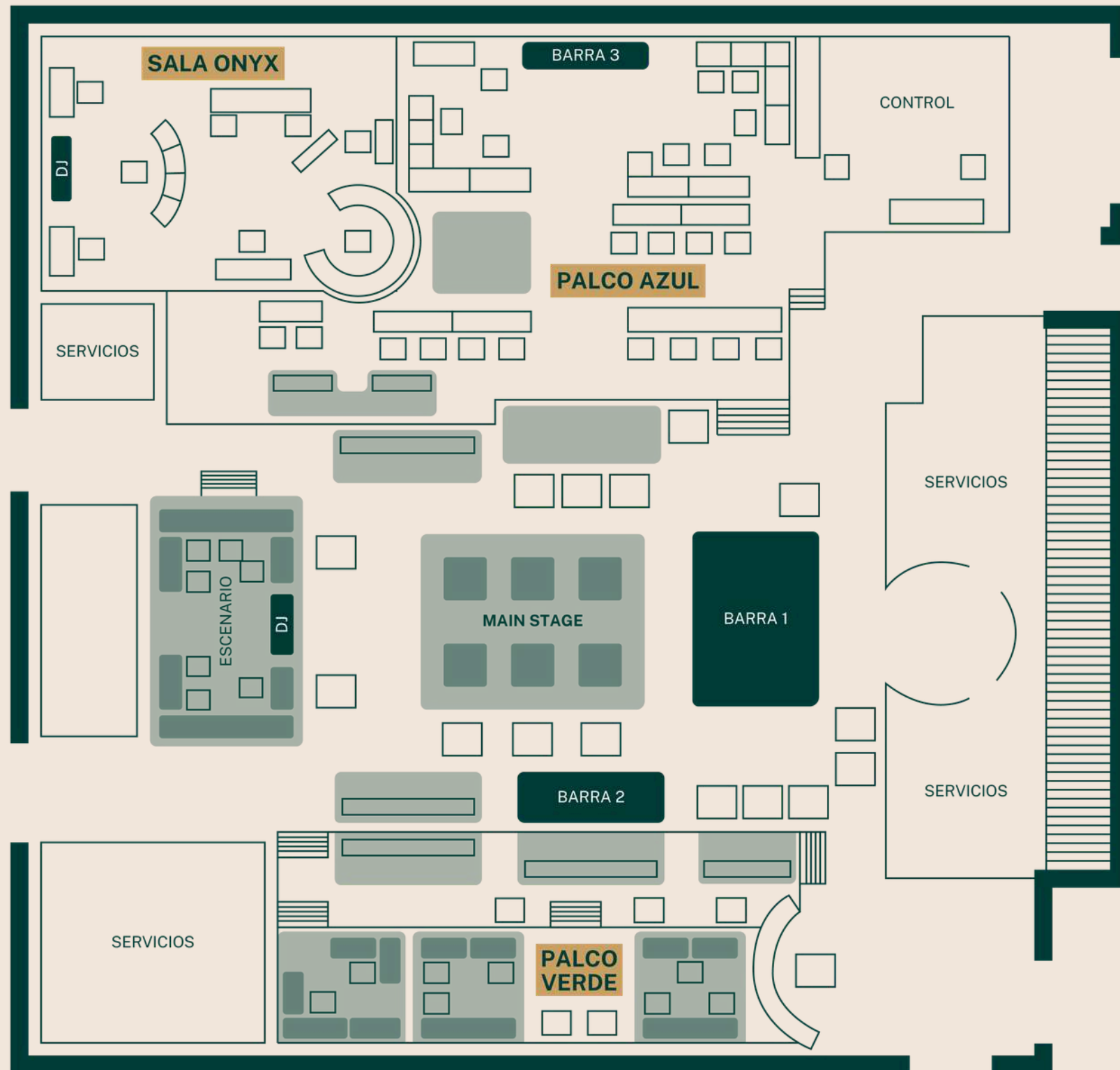
# Espacio

Oh My Club is an elegant and refined venue located in the heart of Chamartín, Madrid. It has a total capacity of 1,300 people, offering high-quality, tailor-made services, and a dedicated commercial team that takes care of every detail to ensure an unforgettable corporate event.

This venue was created to become the most cosmopolitan reference in the Spanish capital.



# Floor plan and location



**Main entrance:**  
C/Rosario Pino 14

**Public transport:**  
Bus: 11, 147, 27, 70, 149  
Train: C10, C2  
Metro: L1, L10, L9

**MELIÀ**  
CASTILLA  
MADRID

**Preferred accommodation:**  
Meliá Castilla (a 1 min.)  
C/Poeta Joan Maragall, 43  
+34 915 67 50 00  
info.melia.castilla@melia.com

**Private transport:**  
Parking Torre Rioja  
(C/ Rosario Pino, 14)  
Parking Rosario Pino, 10

# Spaces



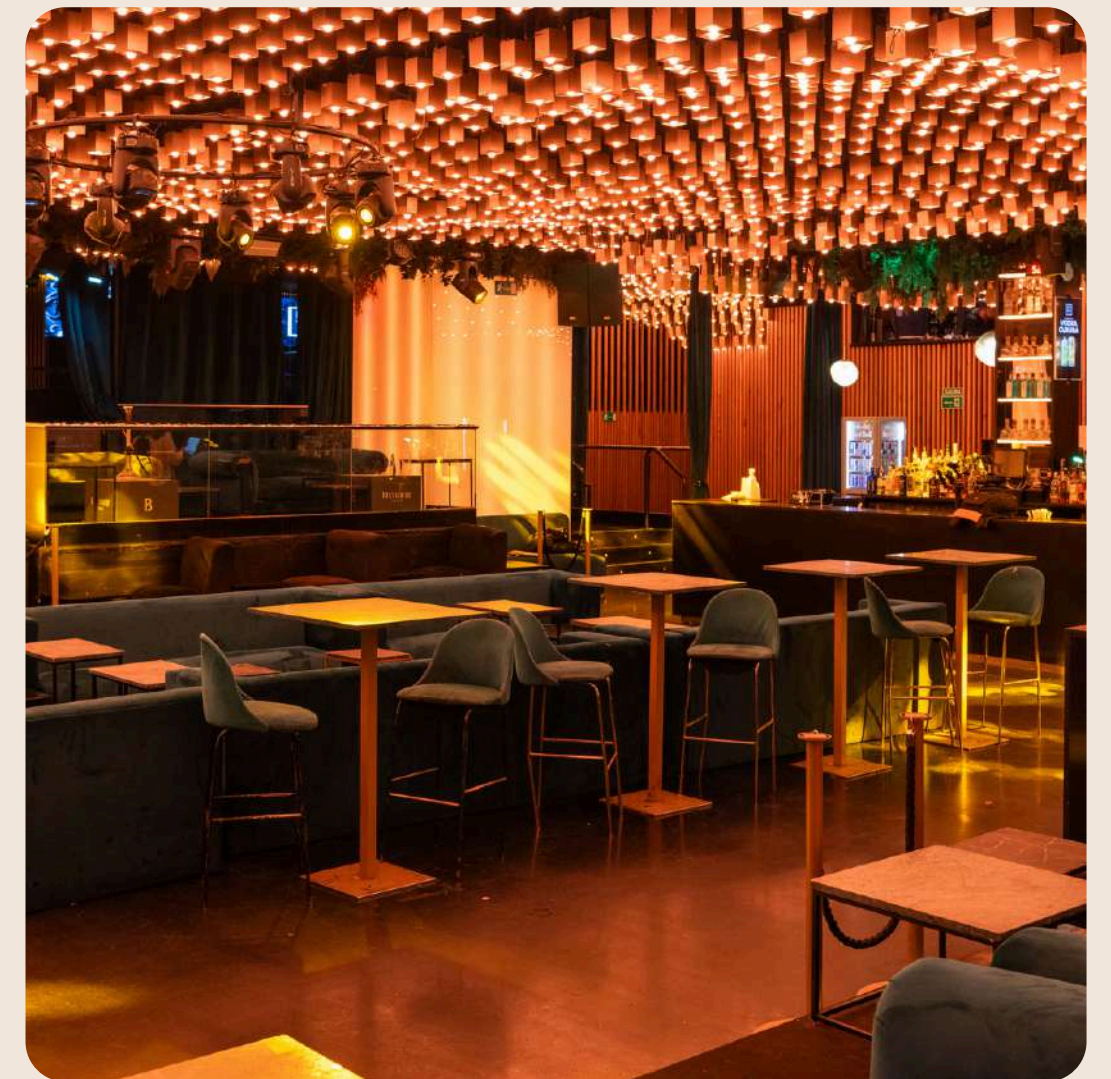
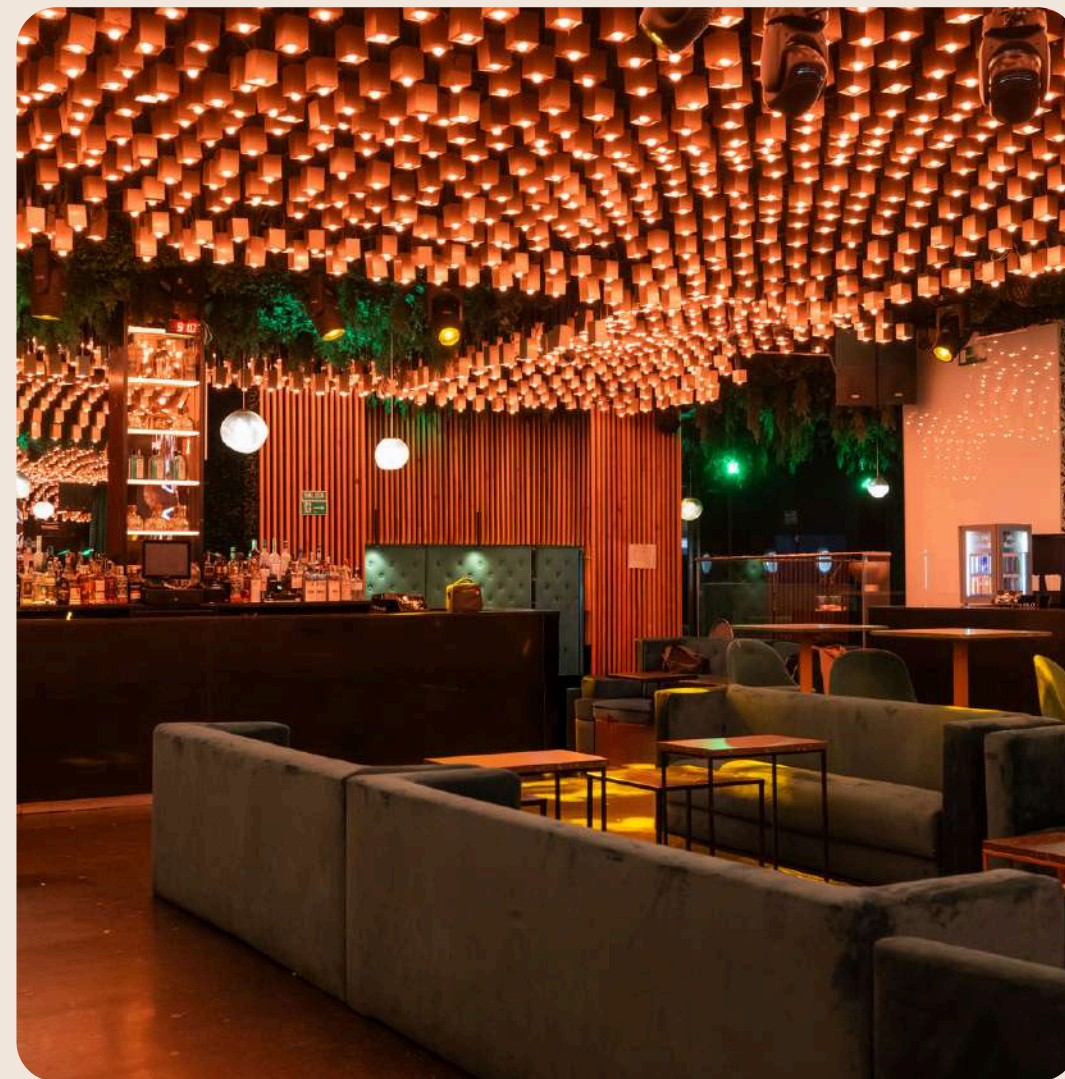
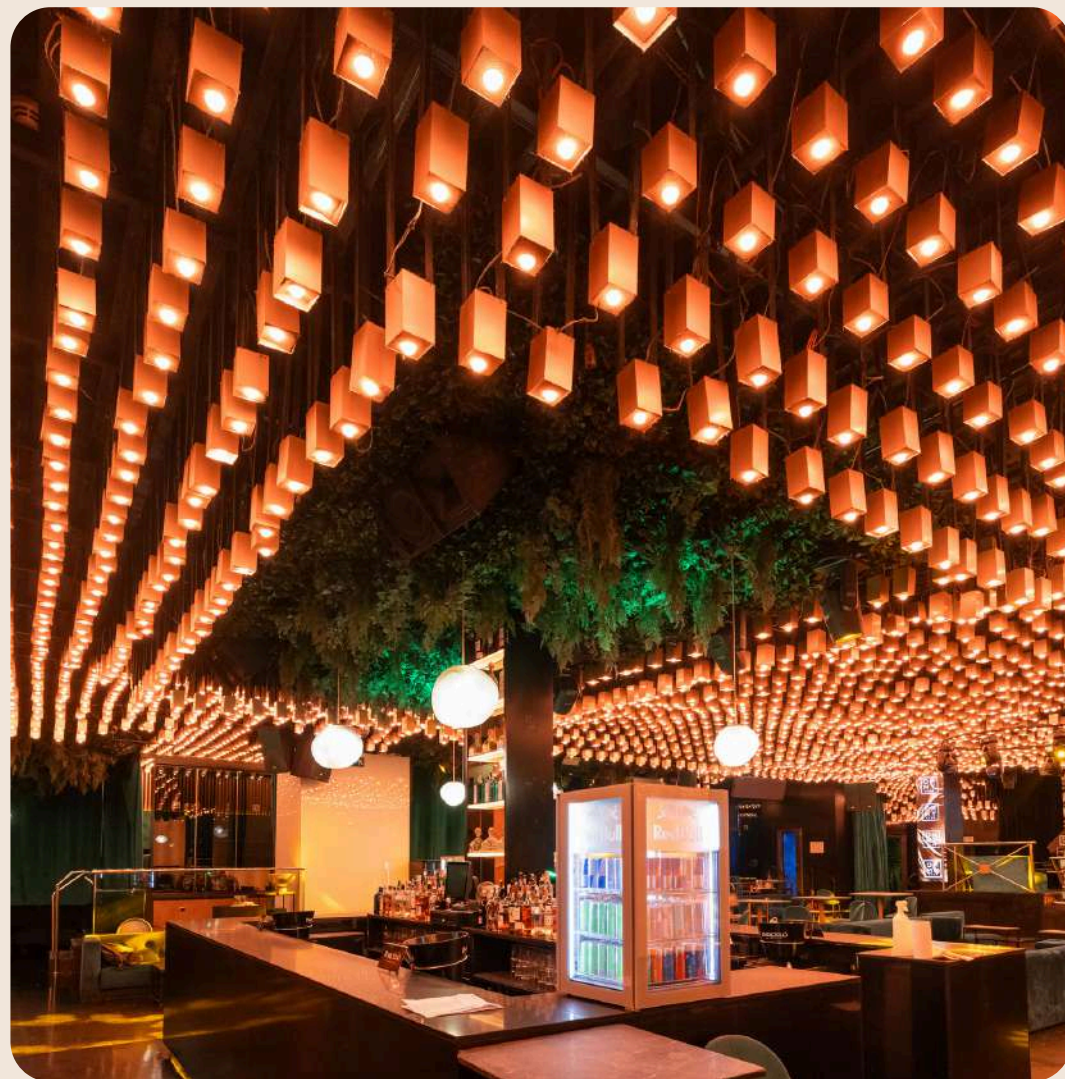
# Main Stage

**Capacity depending on setup:**

Cocktail: 550 guests

Banquet: 140 guests

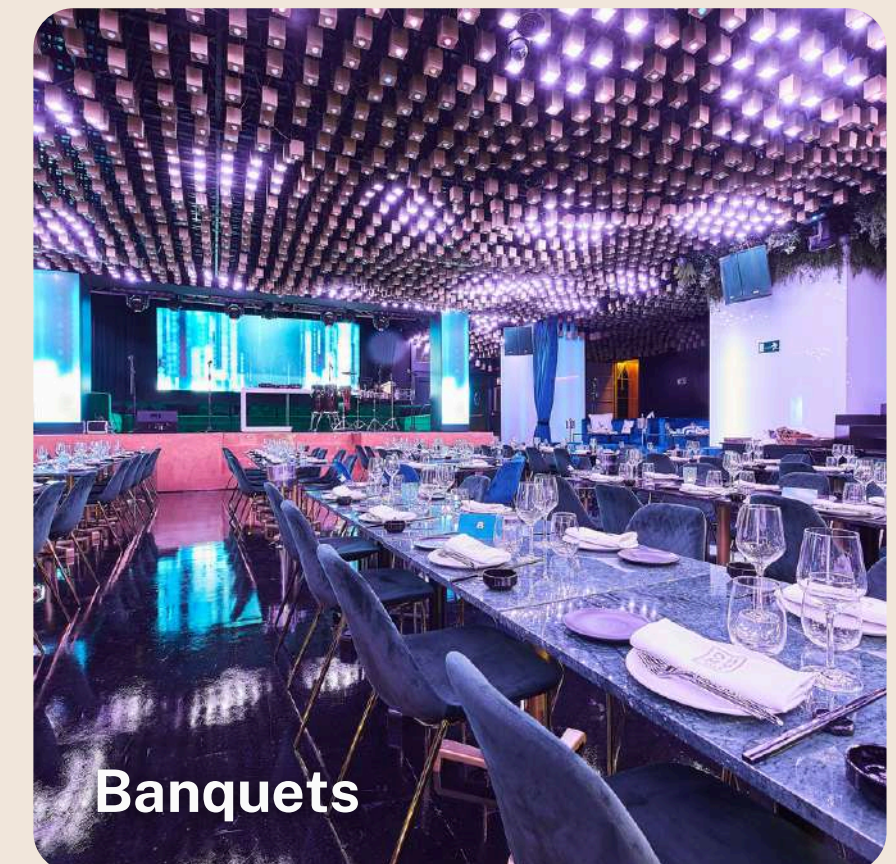
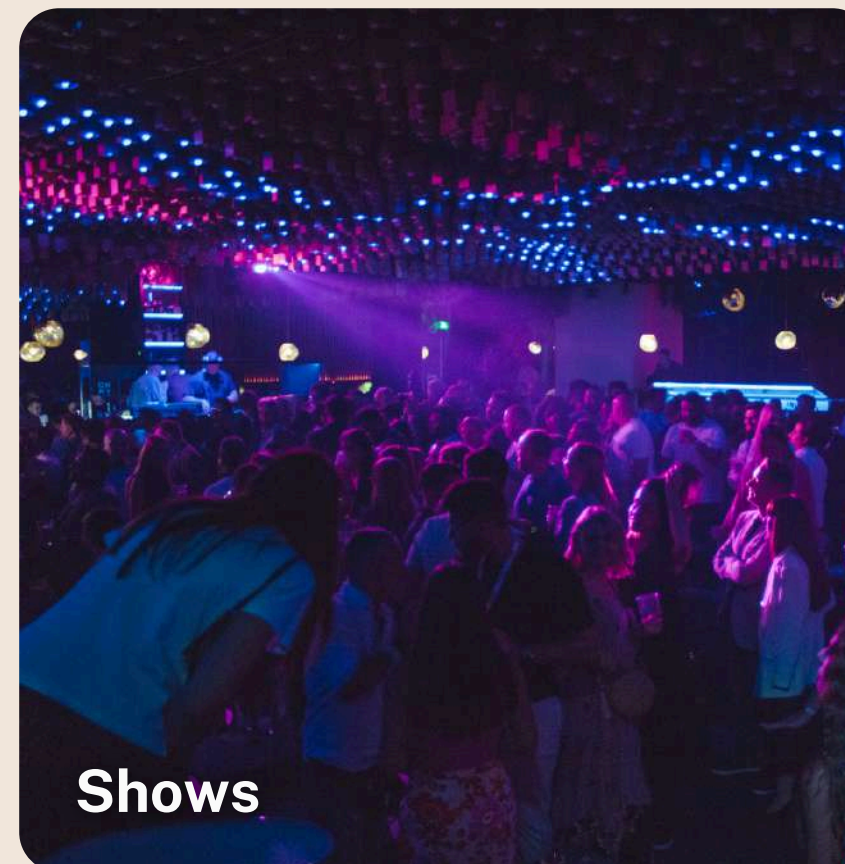
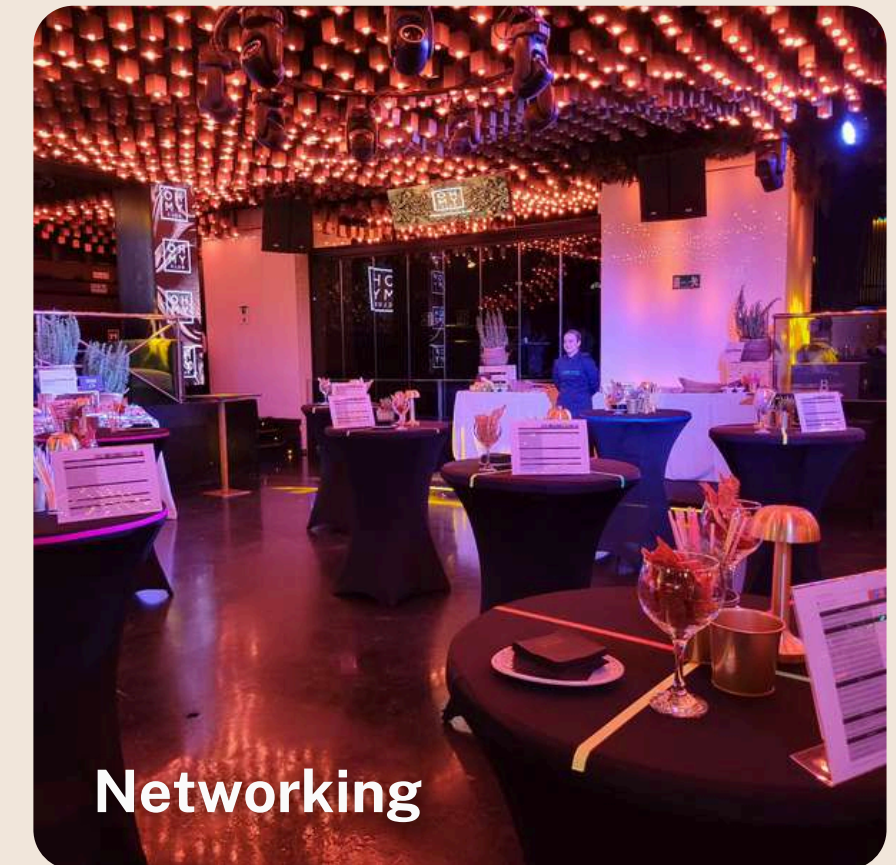
Theatre style: 250 guests



# Main Stage

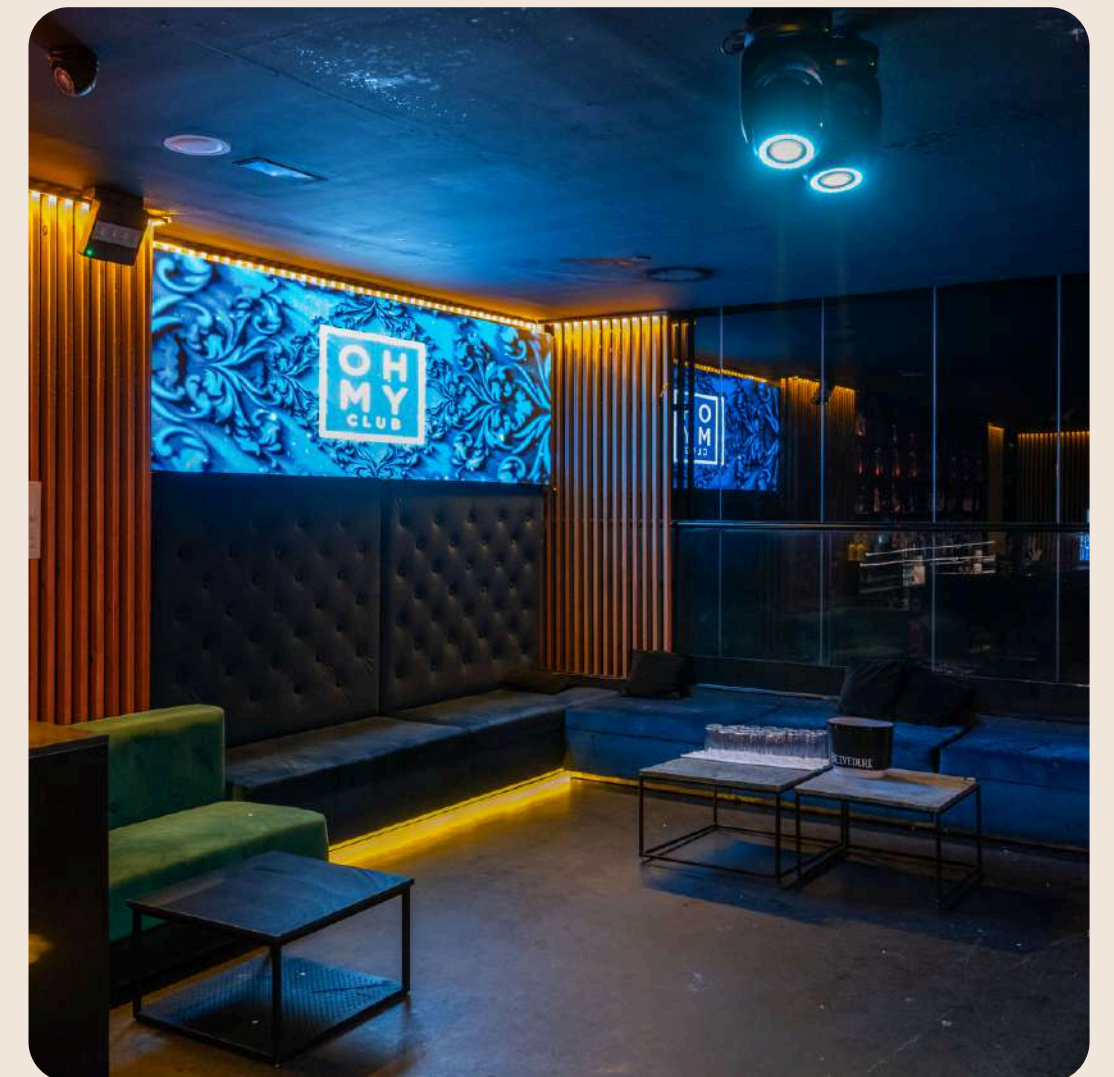
The grand stage provides an exceptional setting for high-profile presentations, conferences, product launches, concerts, and exclusive live performances.

Strategically positioned at the heart of the venue, it offers unobstructed views from every angle, ensuring a truly immersive experience.



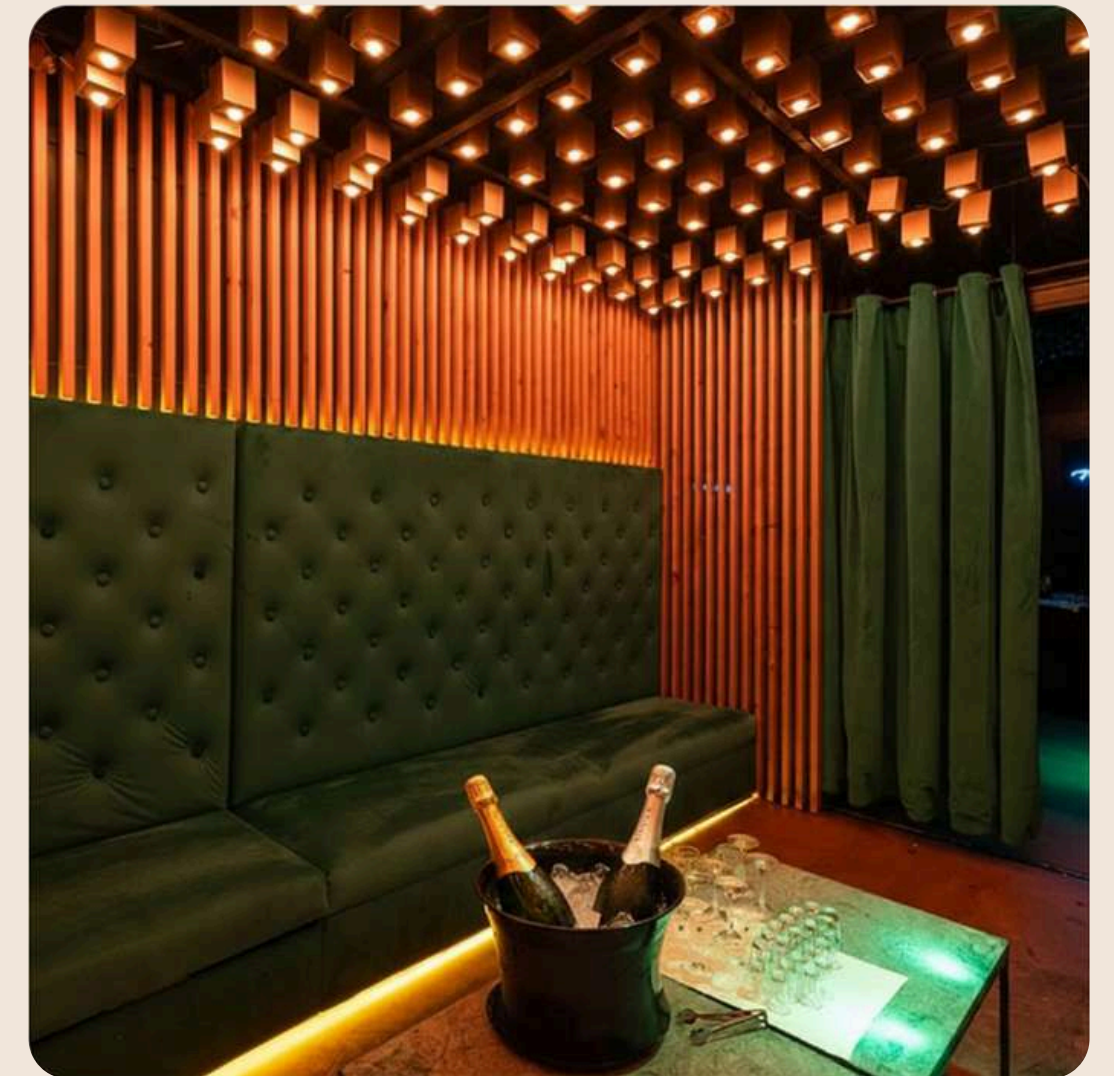
# Palco azul

**Capacity:**  
Cocktail: 250 guests



# Palco verde

**Capacity:**  
Cocktail: 100 guests



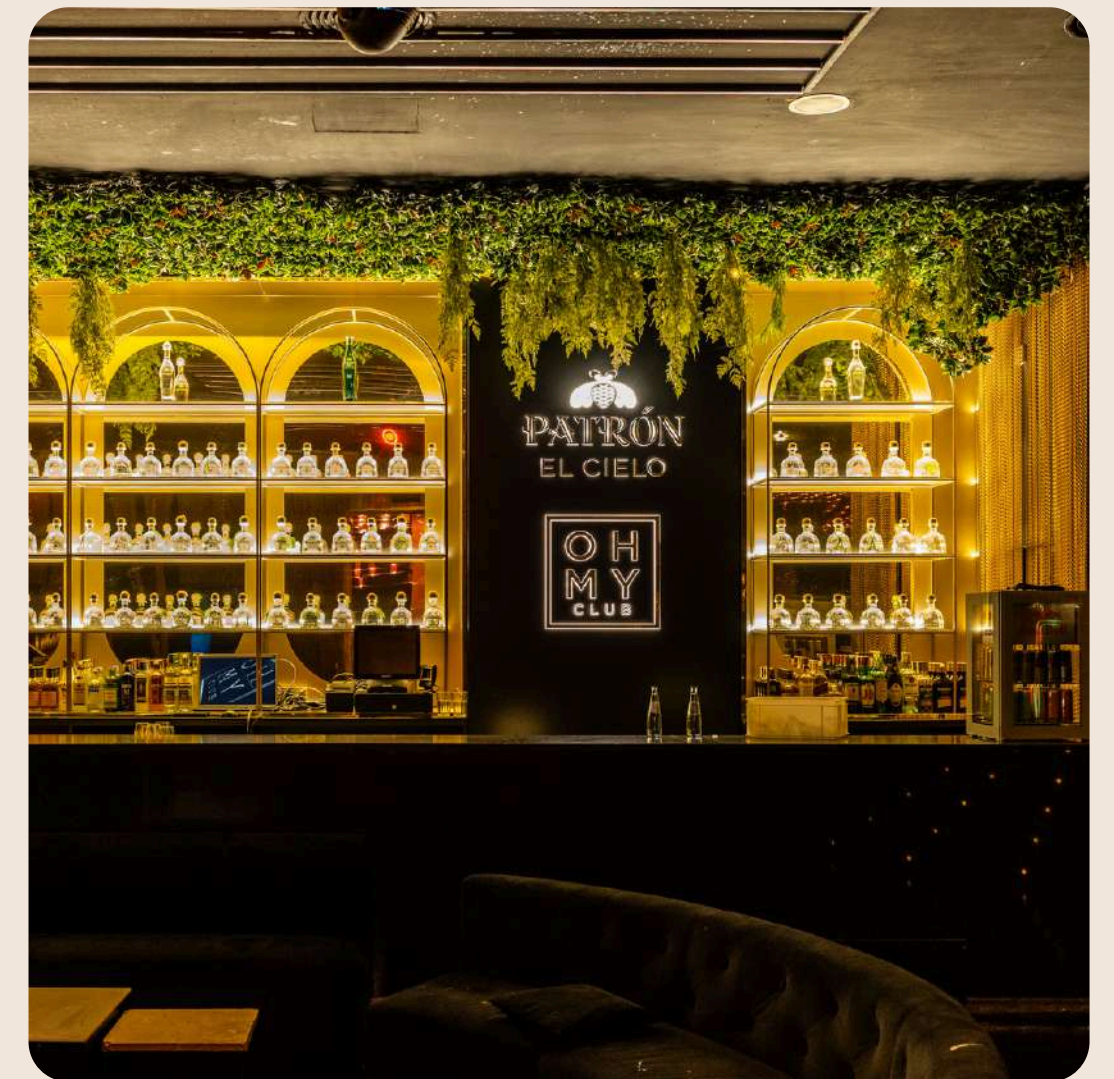
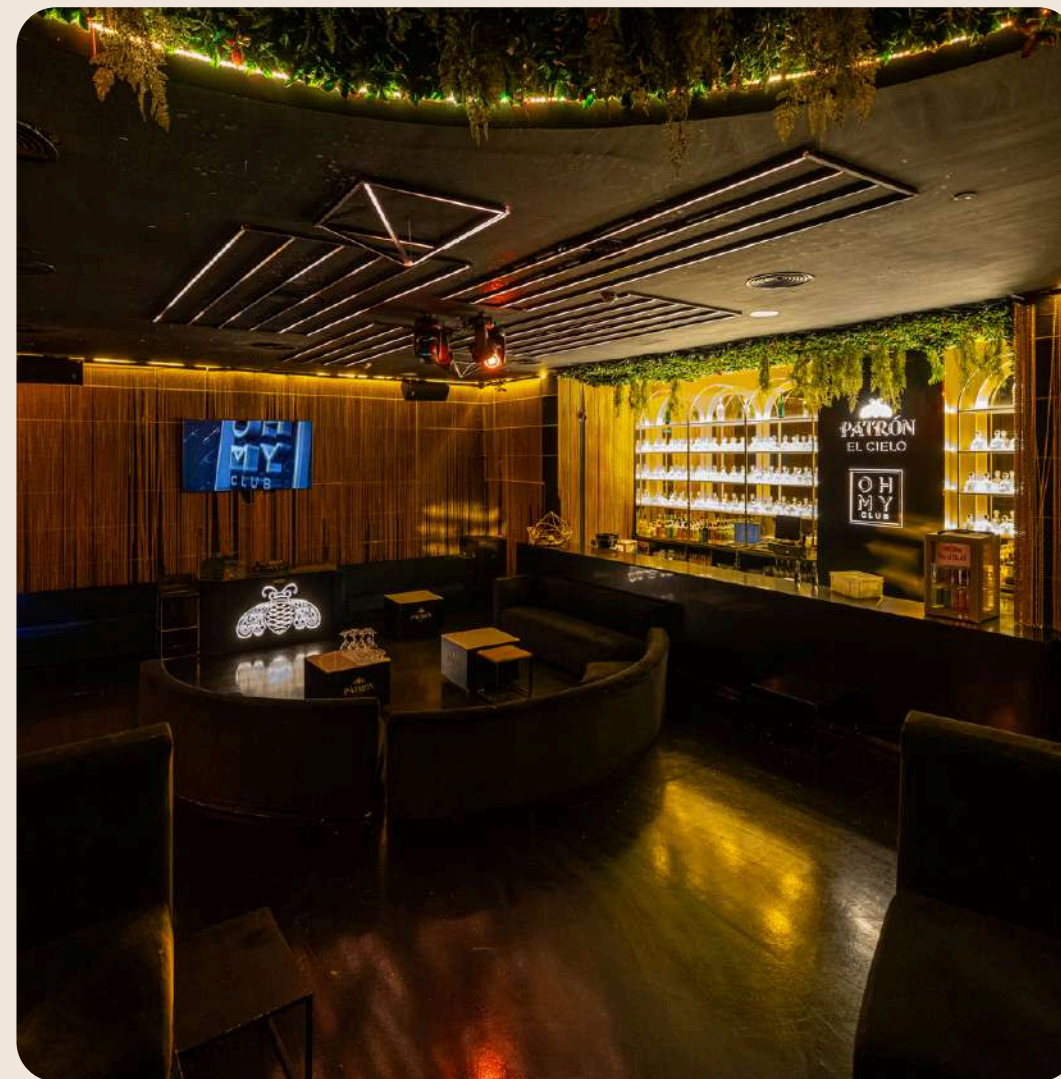
# Onyx room

**Capacity depending on setup:**

Cocktail: 100 guests

Banquet: 40 guests

Theatre style: 60 guests



# Services



# What does Oh My Club include?

We offer more than just a venue.

With every event booking, we include:

- Screens and AV equipment for institutional presentations
- Full Lighting Equipment
- Cloakroom service (máx. 500 hangers)
- Staff (security, waiters, runners, maître, event manager)
- Non-stop Cleaning service

Additional services (optional with extra cost): DJ, technical staff, show/entertainment, photo booth, confetti machine, etc.

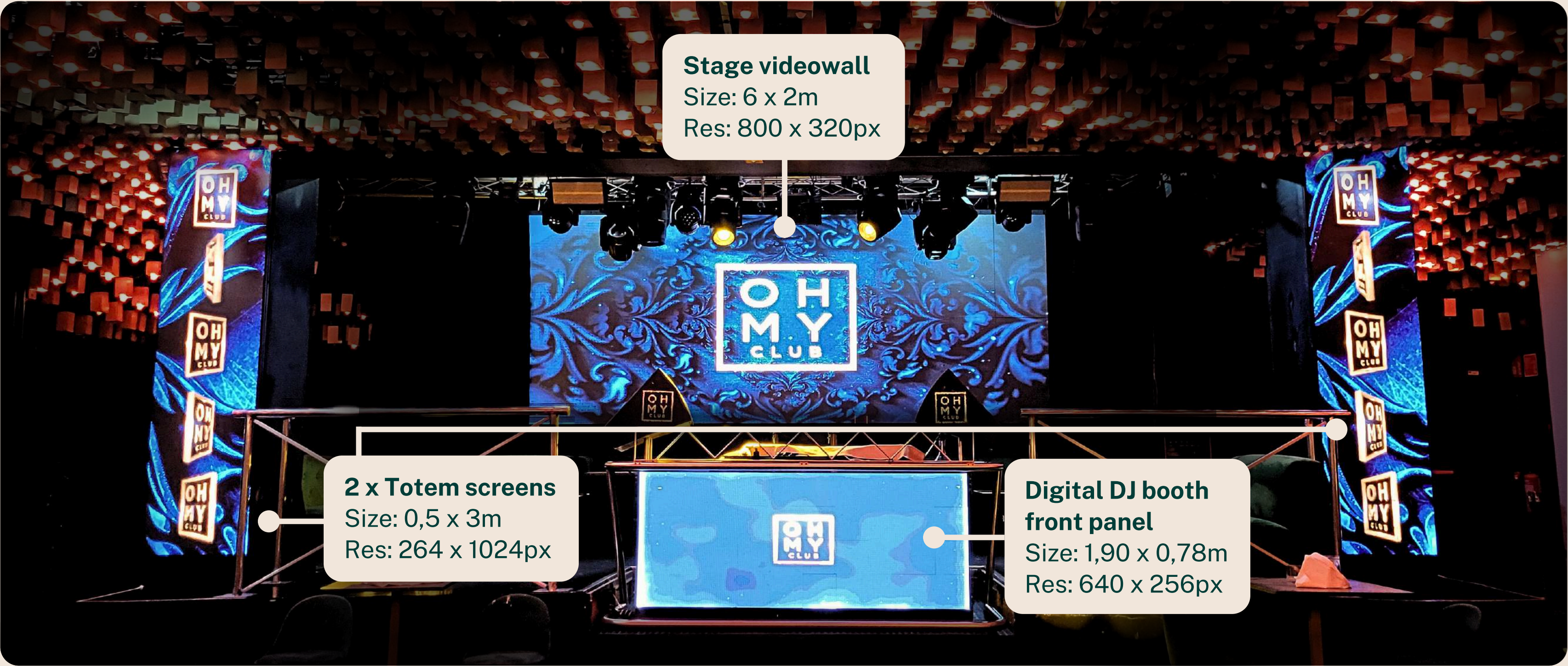


# Services

*Audiovisual*



# Main Stage screen set



**Stage videowall**  
Size: 6 x 2m  
Res: 800 x 320px

**2 x Totem screens**  
Size: 0,5 x 3m  
Res: 264 x 1024px

**Digital DJ booth front panel**  
Size: 1,90 x 0,78m  
Res: 640 x 256px

# Entrance screen set



**Photocall  
videowall**  
Size: 4 x 3,5m  
Res: 960 x 620px



**Outdoor  
street screen**  
Size: 5 x 1,85m  
Res: 1600 x 560px

# Technological innovation for events

## PROFESSIONAL SOUND

**Clarity, power, and acoustic comfort**

High-power, premium-quality sound system

Even coverage throughout the venue

Optimized for presentations and shows

DJ booth and live performance equipment



## STAGE LIGHTING

**Lighting designed for visual impact**

Dynamic and customizable lighting

Programmable LED digital ceiling

Integrated architectural lighting

Special effects for key moments

## VIDEO AND SCREENS

**Maximum brand visibility**

Large-format LED screens

Visuals on stage, dance floor, and DJ booth

Screens for branding and presentations

Support for launches and photocalls



# Technical rider

## SOUND

### **DJ Booth**

1 Pioneer DJM 900 Nexus 2  
1 Pioneer DJM A9  
3 Pioneer CDJ 3000  
3 Pioneer CDJ 2000 Nexus 2  
1 Pioneer XDJ RX3  
2 Lynx HR-1296/5 DJ booth monitors, 500W AES per unit  
2 HR-12/6 booth subwoofers, 600W AES per sub  
1 DSX-1504 amplifier, 1480W  
1 Shure SM58 microphone

### **Live stage setup**

4 Lynx QB-M12 floor monitors, 500W AES  
3 Shure PSM 300 in-ear systems  
2 Shure SLX4D SM58 capsule microphones  
3 Shure SM58 wireless microphones  
3 Shure SM58 wired microphones  
1 Shure PG percussion kit  
7 Rode boom microphone stands  
Soundcraft UI24r mixing console  
Behringer X32 mixing console  
2 x Behringer S-16 digital stage snake, 16 inputs / 8 outputs  
2 XLR splitters, 8 in / 16 out channels for PA – Monitors

## LIGHTING

### **General**

18 Mitek 300W LED moving heads  
8 Wash moving heads 19x10W RGBW  
20 Elfo 100W moving heads  
4 RGB LED strobes, 1000W  
12W RGBW laser  
10 Cameo Q Spot RGBW fixtures  
DJ Power smoke machine 3000W  
DJ Power low fog machine 1500W  
2 CO<sub>2</sub> stage jets  
Digital ceiling with 5400 RGBW LEDs  
RGBW digital ceiling (Onyx Room)  
RGB LED glass columns in the venue  
RGB LED back bars and under-bar lighting  
Golden LED floor lighting for bars, central stage signage  
and wooden wall panels in the room

### **Lighting control software**

Sunlite suite 3  
Madmapper  
Madrix

# Technical rider

## VIDEO

### **Stage screen**

6 m wide x 2 m high screen

Resolution: 800 x 320 px

Brightness: 1500 nits

Lyns DMT 300 processor

### **Stage side screens**

Totem screens, 3 m high x 50 cm wide

Resolution: 256 x 1024 px

Brightness: 1500 nits

Lyns VP-1800 processor

### **Dj screen**

1.90 m wide x 78 cm high screen

Resolution: 640 x 256 px

Brightness: 1200 nits

Novastar MCTRL 700 processor

### **Side dancefloor screens**

Banner screen, 3.50 m wide x 50 cm high

Resolution: 1120 x 160 px

Brightness: 1500 nits

Novastar Vplex processor

### **Outdoor street screen**

5 m wide x 1.85 m high screen

Resolution: 1600 x 560 px

Brightness: 1500 nits

Novastar VX 400 processor

### **Photocall screen**

4 m wide x 3.5 m high screen

Resolution: 960 x 640 px

Brightness: 1800 nits

1 Video player

### **Palco Azul screen**

4 m wide x 1 m high screen

Resolution: 1500 x 480 px

Novastar MCTRL 700 processor

### **Software control**

3 x Resolume Arena

1 Roland V-4EX video mixer

# Additional services

*Catering*

*Shows & entertainment*



# Brands that trust us



# Our culinary partners



# Thank you

Phone: (+34) 656 535 704

Email: [eventos@ohmyclub.es](mailto:eventos@ohmyclub.es)

C. de Rosario Pino, 14. 28020 Madrid



EVENTOS